

28 - 30 St. Peters Street
Canterbury
CT1 2BQ

£940 Per Calendar Month

Finn's
82 Castle Street
Canterbury
CT1 2QD
t: 01227 452111
e: canterbury@finns.co.uk
www.finns.co.uk



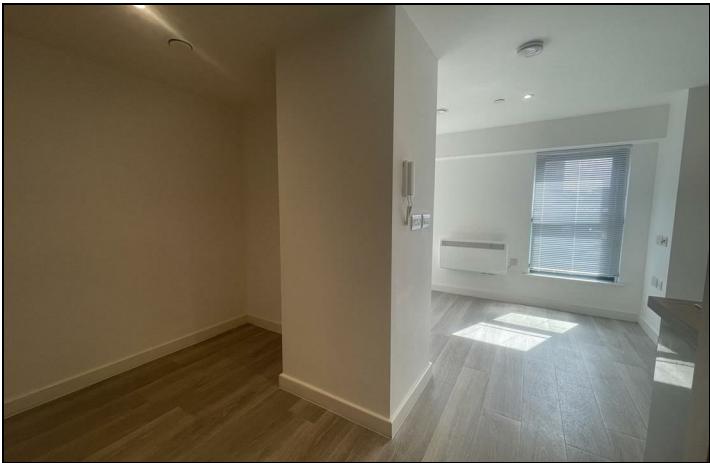
Nestled in the heart of Canterbury, 1 The Barrett Building offers a delightful flat that combines modern convenience with a prime location. This charming property features a spacious room, perfect for both relaxation and entertaining guests, whilst the bedroom area provides a serene retreat, ensuring a restful night's sleep.

The flat includes a contemporary bathroom, designed with comfort in mind. A mini dishwasher, Indesit Washer Dryer makes daily chores a breeze, a fridge freezer and microwave add to the practicality of the kitchen area which also features a ceramic hob and fan oven. Additionally, the entry phone system enhances security and convenience, allowing you to welcome guests with ease.

Situated on St. Peters Street, this property is ideally located for those who wish to enjoy the vibrant culture and history of Canterbury. With an array of shops, cafes, and local attractions just a stone's throw away, you will find everything you need within easy reach.

Experience the charm of city living in this well-appointed flat, where comfort meets convenience.

- Contemporary Studio Flat
- Well equipped kitchen
- Grey Gloss Units
- Entry Phone System
- Prime location
- Deposit £1080.00
- EPC Band C
- Council Tax Band A



Energy Efficiency Rating		
	Current	Potential
Very energy efficient - lower running costs		
(92 plus) A		
(81-91) B		
(69-80) C	77	77
(55-68) D		
(39-54) E		
(21-38) F		
(1-20) G		
Not energy efficient - higher running costs		
England & Wales	EU Directive 2002/91/EC	

Viewing: By appointment through Finn's, Canterbury
Telephone: 01227 452111

Council Tax:
Date: These particulars were prepared on: 10th July 2025

Agent's Note: Wherever appliances or services, fixtures or fittings have been mentioned in these particulars they have not been tested by us. Measurements should not be relied upon. Unless specifically referred to above all fitted carpets, curtains, fixtures and fittings and garden outbuildings and ornaments are excluded from the sale. None of the statements in these particulars are to be relied upon as statements or representatives of fact. Photographs are for guidance only and do not imply items shown are included in the sale - some aspects may have changed since they were taken. No person in the employment of Finn's has authority to give any representation or warranty in relation to this property.